

ETNYRE

CRACK SEALER

250/400 Gallon



Easy to Understand Controls



The Etnyre Crack Sealer is one of the most efficient crack sealing machines available today. The speed of the heating and circulation systems results in less crew idle time, higher production, and lower cost per shift on every crack sealing job.



Operating Controls

The ECS 250/400 is equipped with both automatic and manual operating controls. These machines are versatile enough to take on any job, regardless of operator experience. In auto mode, you can simply select the start, stop, or cleanout functions with the push of a button. In manual mode, you get the control and custom functionality contractors have come to expect from Etnyre. The operator's console is centrally located and is continually monitoring operating status, material temperature, engine controls, and custom set points.



Loading Doors

The (2) loading doors are easily accessible from either side of the machine. The 21" x 36" doors are ergonomically located 54" off the ground for ease of loading. The door latches comply with DOT regulations for elevated temperature material. An optional material loading system is also available.

Efficient Heating and Use

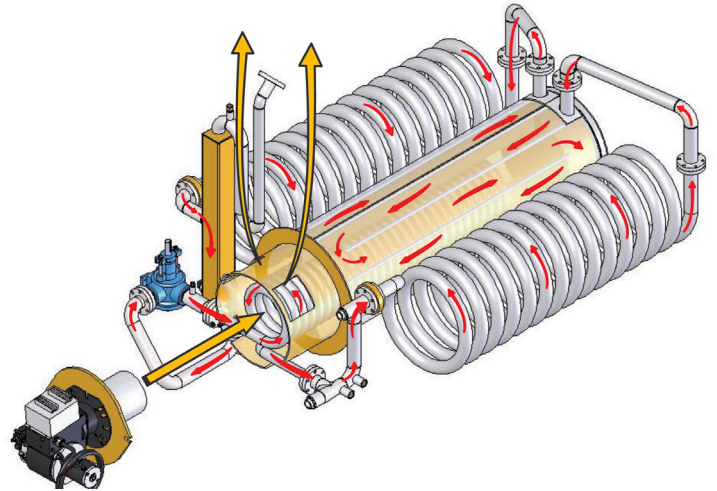


Burner

Enclosed high pressure diesel-oil burner with automatic ignition. The closed indirect heating system ensures fast heating of product for minimal down time.

Heating and Circulation

The ECS 250/400 heating system is a closed loop, flow controlled, hot oil system that is heated by a high pressure diesel burner. The hot oil is circulated through the heating coils by a hot oil pump. This exclusive feature raises sealant temperature to application temperature in as little as (1) hour for most materials.



Heated Hose Box

When not in use, the application hose stores in a heated storage cabinet. This prevents lost time on the job waiting for frozen sealant to heat.

The optional heated hose system has (6) heating elements that work to keep sealant the same temperature in the tank and at the end of the hose to prevent plugging.



Flush-Free System

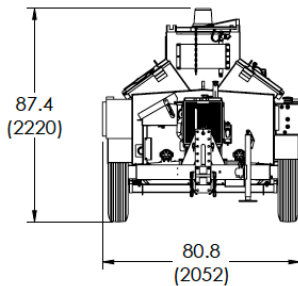
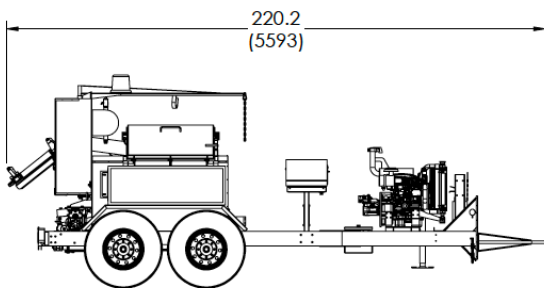
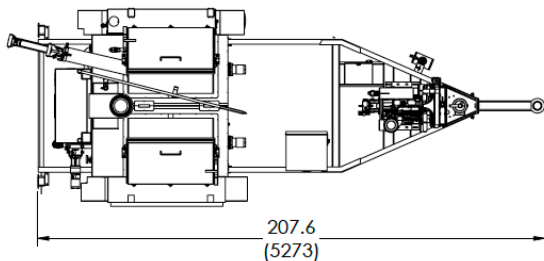
The ECS 250/400 are environmentally friendly and require no solvent flushing at the end of shift. There is no need to carry solvent on the machine, further enhancing the operational safety of the machine.



Experience the Benefits of the Etnyre Crack Sealer!

Quick Start-Up means idle crew time is kept to a minimum while waiting for sealant to heat

The greater heating capability of the Etnyre Crack Sealer System means higher output per hour.



The ECS 250/400 come standard with a hose boom and swivel. The boom keeps the hose off the ground and prevents operator fatigue, while also protecting the heating elements from friction wear from the road surface. This feature is just one more addition that adds to the efficiency, safety, and ease of use that can already be found in the Etnyre crack sealer.

Etnyre Crack Sealers are built in sizes to fit the needs of your job!



	ECS-250	ECS-400
Capacity		
Sealant Tank, max, gallons	250	400
Cyclone Hydraulic Tank	4 Gals	4 Gals
Diesel Fuel, gallons	24	35
Sealant Heating System		
Heating Time to circulate	45 - 60 Minutes	
Heat Input, BTU/hr	315,000 BTU/hr.	
General		
Door Openings	21" W x 36" L	
Door Height	54"	
Engine	3 Cylinder Diesel, Tier 4	
Tires	235/85 R16	
Axles	Tandem 7000 lb axles	
Suspension	Rubber torsion axles	
Brakes	Electric	
LED Lights	Complies with Federal Regulations	
Dry Weight, pounds	5,200	5,700
Gross Weight, pounds	7,600	9,600

Optional

Heated Hose, Engine Cover, Block Load System, Custom Paint Color, Electric Heating Element, Dual Wands, Various Hitch Options, Spare Tire and Mount, Bucket Pour Spout and others available upon request.



E. D. ETNYRE & CO.,

1333 South Daysville Road, Oregon, Illinois 61061
 Phone: 800-995-2116 or 815/732-2116 • Fax 815-732-7400
 Web Site: www.etnyre.com • E Mail: sales@etnyre.com

E. D. Etnyre & Co., whose policy is one of continuous improvement, reserves the right to change specifications without notice. Photos and illustrations contain standard and optional equipment.

K-ECS-21