

# TURN YOUR MATERIALS INTO MONEY

DOMINATE YOUR JOB SITE  
WITH A MOBILE SCREENER THAT WORKS  
AS HARD AS YOU!



# MACHINES THAT MAKE YOU MORE MONEY

**HIGHLY EFFICIENT MOBILE SCREENERS.  
OPERATED STAND-ALONE OR IN  
COMBINATION WITH OTHER MATERIAL  
PROCESSING EQUIPMENT.**

Since 1991, we've established ourselves as the world's leading crushing and screening experts. Our products are used by the most cutting-edge contractors and aggregate producers worldwide while being the #1 choice for those brand-new to processing. We look at material processing in its entirety and design best-in-class every step of the way. *More than 3,000 happy customers can't be wrong.*



## **SOILS & ORGANICS**

Turn inert soil into a screened topsoil commodity.



## **MINING**

Rock screening, sand & gravel, and overburden screening.



## **AGGREGATES**

Produce high-quality aggregates from crushed material.



# DOMINATE THE JOBSITE

**LET RUBBLE MASTER TAKE YOU THERE.**

At RUBBLE MASTER, we understand a smooth operation equals more profit. That's why our mission is to help you dominate the jobsite. No more losing money to high operation costs or wasting time with traditional material disposal processes. Instead, you take back control of your operations and get the job done right.



## PERFORMANCE

Our mobile screens provide the best throughput capacity in their class without sacrificing mobility. Do more, more efficiently.

**1-2-3  
GO!**

## OPERATE WITH EASE

We make the most nimble heavy equipment available. Our screens make material processing easy. You can put any operator on our machine with confidence.



## GO ANYWHERE, ANYTIME

RUBBLE MASTER machines are designed with mobility in mind, giving you the freedom to move anywhere, anytime.



## EASY TO PAIR WITH CRUSHERS

Our mobile screens are designed for a smooth material transfer to build aggregate systems quickly and easily.

# SCALPER SCREENS

MAXIMIZE VERSATILITY. MAXIMIZE PROFITS.

RUBBLE MASTER Scalping Screens deliver a high-performance with maximum versatility so that you can process more materials and adapt to changing specs and job requirements. Process topsoil, dirt, aggregates, demolition waste, blast rock, mulch, overburden, street sweepings, salt, and more.



**ONE MACHINE, MULTIPLE APPLICATIONS**  
WORKS WELL IN HEAVY-DUTY SCALPING APPLICATIONS AS WELL AS PRECISION SCREENING.



**HEAVY DUTY**  
DESIGNED TO SCREEN BULKY MATERIAL SUCH AS BLAST ROCK, EXCAVATED MATERIALS, OR DEMOLITION WASTE.



**3-WAY SPLIT**  
PRODUCE UP TO 3 FINISHED PRODUCTS.



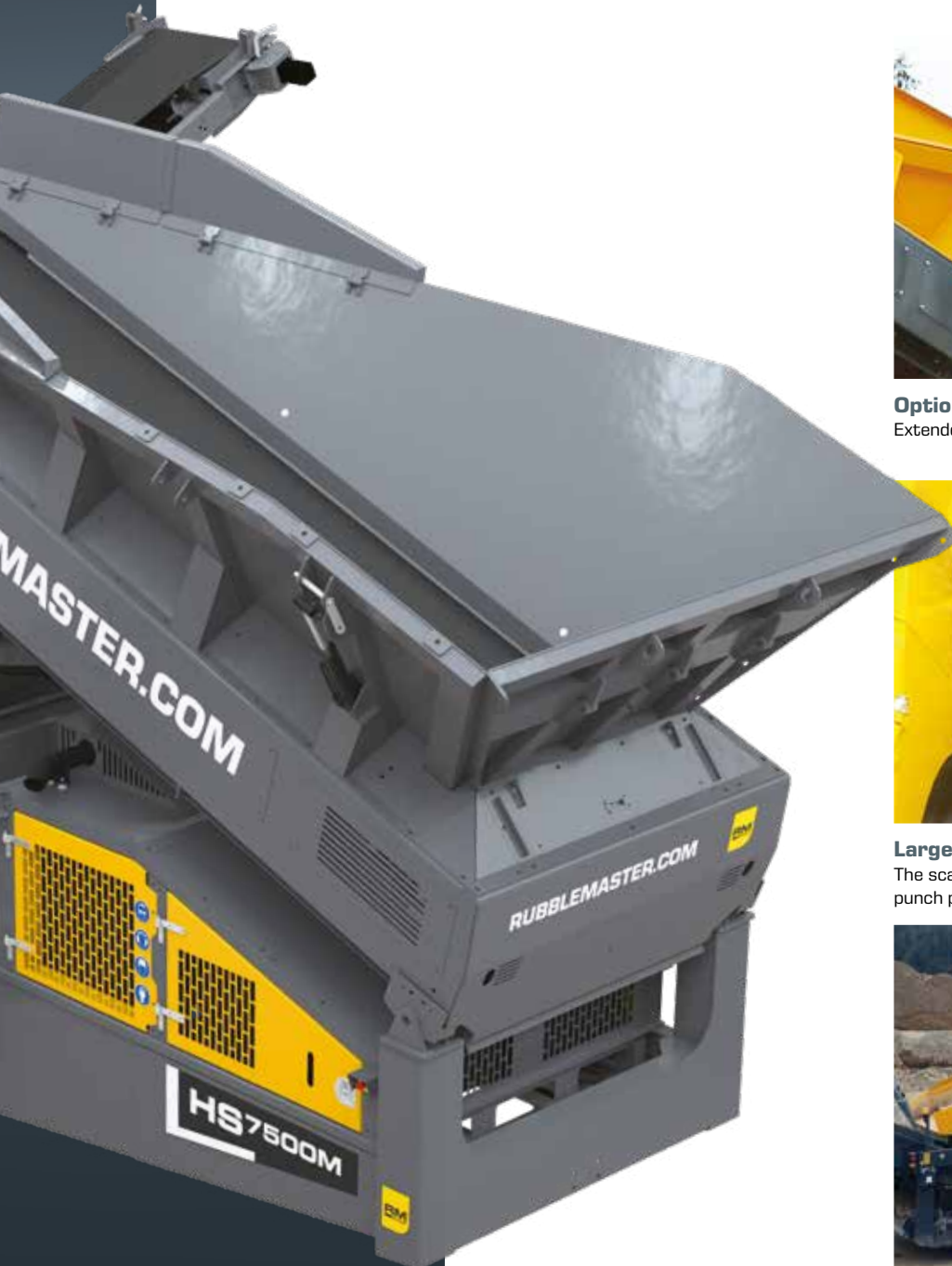
**Fast and Easy Setup**

Screen can be set up hydraulically within 15 minutes.



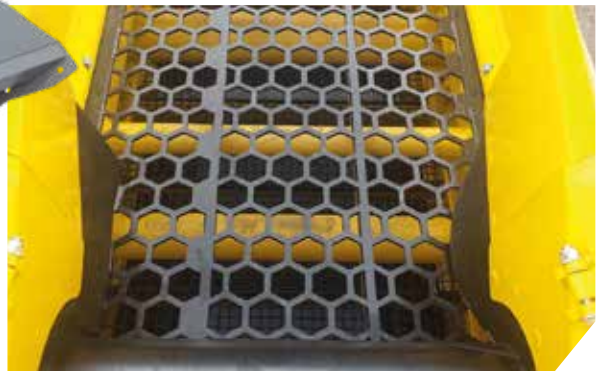
**Easy to Transport**

Designed to be fed with wide loader buckets.



**Optional Hopper Wing Plates**

Extended hopper wings to facilitate loading.



**Large Variety of Screens**

The scalper screen can be equipped with mesh screens, heavy-duty punch plate, finger-screens, Bofor bars and mesh screens.



**Large Feed Hopper**

Easy feeding with an excavator or wheel loader.

# RM HS3500M

## SCALPER SCREEN

### SPECS

**4' x 9'**  
SCREEN-BOX

<b>Screen decks</b>	2 decks
<b>Screenbox angle</b>	14°, fixed
<b>Feed hopper, volume</b>	6.5 yd <sup>3</sup>   5 m <sup>3</sup>
<b>Feed hopper, belt width</b>	41"   1,050 mm
<b>Oversize material discharge belt width</b>	41"   1,050 mm
<b>Oversize material discharge height</b>	11' 3"   3,430 mm
<b>Mid-size material discharge belt width</b>	26"   650 mm
<b>Mid-size material discharge height</b>	10' 4"   3,145 mm
<b>Fines discharge belt width</b>	26"   650 mm
<b>Fines discharge height</b>	10' 4"   3,145 mm
<b>Transport dimensions (LxWxH)</b>	32' 5" x 8' 5" x 10' 6"   9,880 x 2,550 x 3,190 mm
<b>Weight, basic machine</b>	36,400 lbs   16,500 kg
<b>Engine</b>	Deutz diesel engine 75 HP   55 kw (Tier 4F)

### OPTIONS

- Top deck Bofor bars
- Top deck finger screen
- Top deck punch plate
- Hopper wing plates



# RM HS5000M

## SCALPER SCREEN

### SPECS

**5' x 12'**  
SCREEN-BOX

<b>Screen decks</b>	2 decks
<b>Screenbox angle</b>	15° - 20°, adjustable
<b>Feed hopper, volume</b>	7.8 yd <sup>3</sup>   6 m <sup>3</sup>
<b>Feed hopper, belt width</b>	51"   1,300 mm
<b>Oversize material discharge belt width</b>	48"   1,200 mm
<b>Oversize material discharge height</b>	8' 6" - 12' 3"   2,580 - 3,735 mm
<b>Mid-size material discharge belt width</b>	31"   800 mm
<b>Mid-size material discharge height</b>	12'   3,670mm
<b>Fines discharge belt width</b>	31"   800 mm
<b>Fines discharge height</b>	12' 8"   3,870mm
<b>Transport dimensions (LxWxH)</b>	44'1" x 8'9" x 10'6"   13,440 x 2,730 x 3,200 mm
<b>Weight, basic machine</b>	54,000 lbs   24,500 kg
<b>Engine</b>	Cummins diesel engine 130 HP 97 kw (Tier 4F)

### OPTIONS

- Top deck Bofor bars
- Hopper wing plates
- Top deck punch plate
- 2 way split
- Top deck finger screen



# RM HS7500M

## SCALPER SCREEN

### SPECS



**5' x 16'**  
SCREEN-BOX

<b>Scree decks</b>	2 decks
<b>Screenbox angle</b>	15° - 20°, adjustable
<b>Feed hopper, volume</b>	11,3 vg <sup>3</sup>   8,7 m <sup>3</sup>
<b>Feed hopper, belt width</b>	55"   1,400 m
<b>Oversize material discharge belt width</b>	63"   1,600 m
<b>Oversize material discharge height</b>	9' 9" - 12' 4"   2,980 - 3,750 mm
<b>Mid-size material discharge belt width</b>	36"   900 mm
<b>Mid-size material discharge height</b>	12' 5"   3,780 mm
<b>Fines discharge belt width</b>	36"   900 mm
<b>Fines discharge height</b>	13' 5"   4,080 mm
<b>Transport dimensions (LxWxH)</b>	49' 3" x 9' 7" x 11' 3"   15,005 x 2,920 x 3,430 mm
<b>Weight, basic machine</b>	72,800 lbs   33,000 kg
<b>Engine</b>	Cummins diesel engine 130 HP   97 kw (Tier 4F)

### OPTIONS

- Top deck Bofor bars
- Top deck punch plate
- Top deck finger screen
- Hopper wing plates
- Hardox apron feeder
- 2 way split





# RM HS11000M

## SCALPER SCREEN

### SPECS

**6' x 20'**  
SCREEN-BOX

<b>Screen decks</b>	2 decks
<b>Screenbox angle</b>	13° - 17°, adjustable
<b>Feed hopper, volume</b>	11.3 yd <sup>3</sup>   8.7 m <sup>3</sup>
<b>Feed hopper, belt width</b>	55"   1,400 mm
<b>Oversize material discharge belt width</b>	63"   1,600 mm
<b>Oversize material discharge height</b>	8'10" - 12'10"   2,700 - 3,900 mm
<b>Mid-size material discharge belt width</b>	40"   1,000 mm
<b>Mid-size material discharge height</b>	10' 2"   3,100 mm
<b>Fines discharge belt width</b>	42"   1,050 mm
<b>Fines discharge height</b>	12' 1"   3,700 mm
<b>Transport dimensions (LxWxH)</b>	53' 8" x 9' 10" x 11' 8"   16,345 x 3,000 x 3,550 mm
<b>Weight, basic machine</b>	89,500 lbs   40,500 kg
<b>Engine</b>	Cummins diesel engine 225 HP   168 kw (Tier 4F)

### OPTIONS

- Top deck Bofor bars
- Top deck punch plate
- Top deck finger screen
- Hopper wing plates
- Hardox apron feeder



# INCLINE SCREENS

## PRECISION SCREENING AT ITS BEST

You need to produce multiple products fast and reliably. The RM MSC-Series Incline Screens are high-performance screening plants for aggregate producers and sand & gravel pits. The proven screening plants feature large screening surfaces so that you keep up your high-capacity demands with small infeed material.



### HIGH PERFORMANCE

UNMATCHED PERFORMANCE WITH SMALL INFEED MATERIAL.



### SMOOTH MATERIAL TRANSFER

EASY TRANSFER FROM CRUSHERS TO THE SCREENER AND SIMPLE CLOSED-CIRCUIT CONFIGURATIONS.



### EASY SCREEN MEDIA CHANGE

EASY ACCESS TO SCREEN DECKS AND USER-FRIENDLY WEDGE CLAMPING SYSTEM.



**Easy Change of Screen Media**

Drop tail conveyor and screen-box to the ground for ease of access.



**Large 12yd<sup>3</sup> Feed Hopper**

Designed to be fed with wide loader buckets.



**Easy to Transport**

Discharge conveyors fold, and the screen-box can be lowered hydraulically.



**Hydraulic Tipping Grid**

Optional radio remote control and optional live head.



**Quick Wedge Tensioning**

Fast and easy change of screen cloths keep setup times to a minimum.

# RM MSC8500M

## INCLINE SCREEN

### SPECS

**5' x 18'**  
SCREEN-BOX

<b>Screen decks</b>	2 or 3 decks
<b>Screenbox angle</b>	20° - 30°, adjustable
<b>Feed bunker, volume</b>	12yd <sup>3</sup>   9.2 m <sup>3</sup>
<b>Feed conveyor</b>	41"   1,050 mm
<b>Fines discharge conveyor width</b>	48"   1,200 mm
<b>Mid-size and oversize discharge conveyor width</b>	31"   800 mm
<b>Engine</b>	Cummins diesel engine 130 HP   97 kw (Tier 4F)
<b>2 deck configuration</b>	
<b>Fines discharge height</b>	12' 4" - 16' 3"   3,750 - 4,960 mm
<b>Mid-size and oversize discharge height</b>	16' 8"   5,100 mm
<b>Transport dimensions (LxWxH)</b>	57' 11" x 9' 11" x 11' 2"   17,650 x 3,000 x 3,400 mm
<b>Weight</b>	70,550 lbs   32,000 kg
<b>3 deck configuration</b>	
<b>Fines discharge height</b>	12' 9" - 16' 6"   3,880 - 5,025 mm
<b>Mid-size and oversize discharge height</b>	15' 1"   4,615 mm
<b>Transport dimensions (LxWxH)</b>	57' 10" x 9' 11" x 11' 8"   17,610 x 3,000 x 3,550 mm
<b>Weight</b>	76,100 lbs   34,500 kg

### OPTIONS

- Live head
- Crusher chute
- Rinser kit



# RM MSC10500M

## INCLINE SCREEN

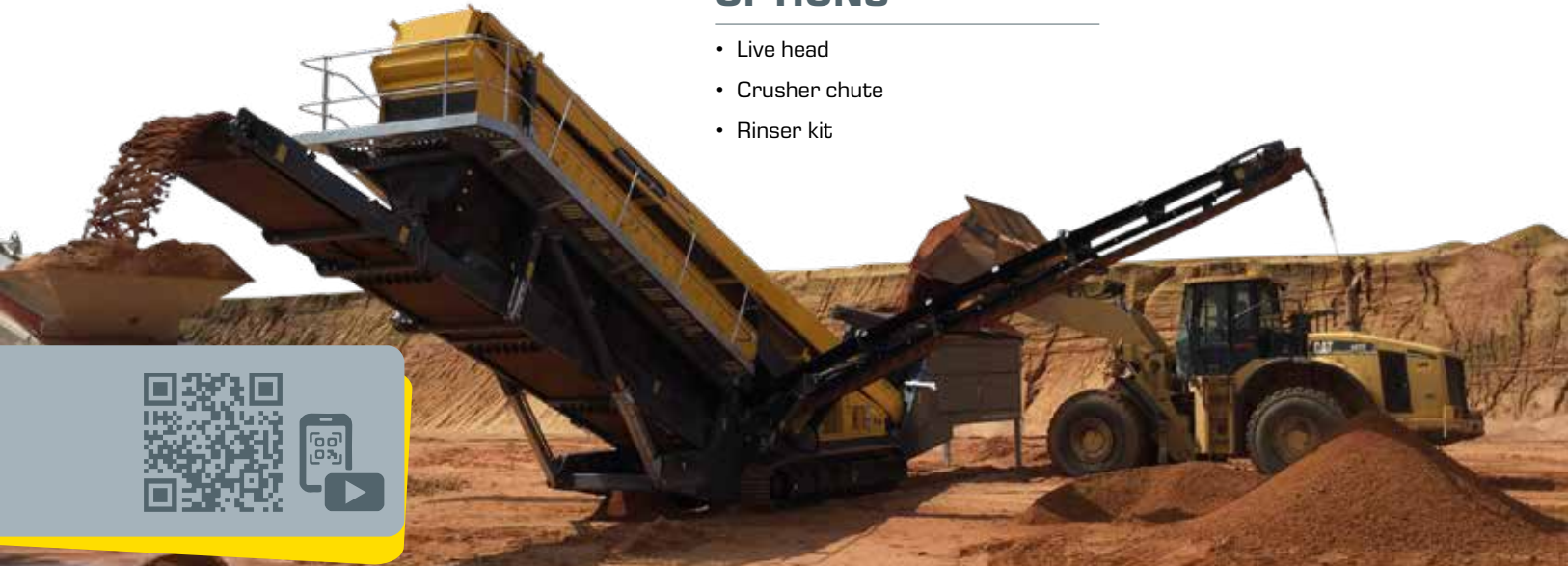
### SPECS

**5' x 22'**  
SCREEN-BOX

<b>Screen decks</b>	2 or 3 decks
<b>Screenbox angle</b>	20° - 30°, adjustable
<b>Feed bunker, volume</b>	12yd <sup>3</sup>   9.2 m <sup>3</sup>
<b>Feed conveyor</b>	41"   1,050 mm
<b>Fines discharge conveyor width</b>	48"   1,200 mm
<b>Mid-size and oversize discharge conveyor width</b>	31"   800 mm
<b>Engine</b>	Cummins diesel engine   130 HP   97 kw (Tier 4F)
<b>2 deck configuration</b>	
<b>Fines discharge height</b>	14' 1" - 18' 7"   4,300 - 5,675 mm
<b>Mid-size and oversize discharge height</b>	16' 8"   5,100 mm
<b>Transport dimensions (LxWxH)</b>	61' 11" x 9' 11" x 11' 2"   18,850 x 3,000 x 3,400 mm
<b>Weight</b>	72,750 lbs   33,000 kg
<b>3 deck configuration</b>	
<b>Fines discharge height</b>	15' 5" - 18' 9"   4,700 - 5,725 mm
<b>Mid-size and oversize discharge height</b>	16' 8"   5,100 mm
<b>Transport dimensions (LxWxH)</b>	61' 11" x 9' 11" x 11' 6"   18,860 x 3,000 x 3,500 mm
<b>Weight</b>	78,300 lbs   35,500 kg

### OPTIONS

- Live head
- Crusher chute
- Rinser kit



# RM MSC8500e

## ELECTRIC INCLINE SCREEN

### SPECS

**5' x 18'**  
SCREEN-BOX

<b>Screen decks</b>	2 or 3 decks
<b>Screenbox angle</b>	20° - 30°, adjustable
<b>Feed bunker, volume</b>	12yd <sup>3</sup>   9.2 m <sup>3</sup>
<b>Feed conveyor</b>	41"   1,050 mm
<b>Fines discharge conveyor width</b>	48"   1,200 mm
<b>Mid-size and oversize discharge conveyor width</b>	31"   800 mm
<b>Engine</b>	Cummins diesel engine 135HP   101 kW (TIER 4F)
<b>2 deck configuration</b>	
<b>Fines discharge height</b>	12' 4" - 16' 3"   3,750 - 4,960 mm
<b>Mid-size and oversize discharge height</b>	16' 8"   5,100 mm
<b>Transport dimensions (LxWxH)</b>	57' 11" x 9' 11" x 11' 2"   17,650 x 3,000 x 3,400 mm
<b>Weight</b>	70,550 lbs   32,000 kg
<b>3 deck configuration</b>	
<b>Fines discharge height</b>	12' 9" - 16' 6"   3,880 - 5,025 mm
<b>Mid-size and oversize discharge height</b>	15' 1"   4,615 mm
<b>Transport dimensions (LxWxH)</b>	57' 10" x 9' 11" x 11' 8"   17,610 x 3,000 x 3,550 mm
<b>Weight</b>	76,100 lbs   34,500 kg

### OPTIONS

- Live head
- Crusher chute
- Rinser kit



# SAVE UP TO 20% FUEL STAND-ALONE. SAVE UP TO 50% FUEL IN COMBINATION WITH A RUBBLE MASTER CRUSHER

MAXIMIZE PROFITS. MINIMIZE MAINTENANCE.



#### ELECTRIC DRIVEN

DIESEL-ELECTRIC POWERED  
IN A STAND-ALONE OPERATION  
OR 100% ELECTRIC POWERED  
BY A RUBBLE MASTER  
CRUSHER.



#### NEXT-GENERATION OPERATOR EXPERIENCE

GET MORE OF WHAT YOU  
LOVE ABOUT OUR CRUSHERS.  
SIMPLICITY. SAFETY.  
PERFORMANCE.



#### PLUG & PLAY

COMBINE THIS SCREENER  
WITH A RM 100G01 OR A  
RM 120X IMPACT CRUSHER  
TO REDUCE FUEL BURN AND  
ENGINE RUNTIME.

“ WE GET THE MOST  
BANG FOR OUR BUCK ”

“The diesel-electric drive saves us up to 20% on diesel costs during operation.  
This is not only good for business, but also for conserving nature and our planet.”

Eric Galgani, SARL Galgani TP & Recyclage  
Provence-Alpes-Cote d'Azur, France



# WET SCREENING

OPTIONAL RINSER KIT TO CONVERT YOUR INCLINE SCREEN INTO A MOBILE WASH PLANT\*



### RINSER KIT

INCLUDES PLUMBING, SPRAY BARS, AND CATCH BOX



### PRODUCE A HIGHER QUALITY PRODUCT

IDEAL FOR PRODUCING SPEC MATERIAL AND SEGREGATING SAND AND SILT



### EASY TO INTEGRATE

WORKS WITH MOST DEWATERING AND AFTER TREATMENT SYSTEMS



### EASY TO MOBILIZE

FAST AND EFFICIENT SET UP ON THE JOB SITE



### SPECIALITY SCREEN MEDIA

POLYURETHANE OR LIVE WIRE SCREEN MEDIA OPTIONS



### DRY SCREENING

EASY TO CONVERT TO A DRY SCREEN





# TRACKED CONVEYORS

PAIR YOUR CRUSHER, SCREEN, OR SHREDDER WITH A TRACKED CONVEYOR TO MAXIMIZE PRODUCTION AND MINIMIZE OPERATING COSTS.

	RM MTS1508US	RM MTS2410US
<b>Conveyor length</b>	50'	80'
<b>Belt width</b>	36"   914 mm	42"   1,066 mm
<b>Stockpile height</b>	23'   7,000 mm	30'   9,144 mm
<b>Fuel capacity</b>	20 gal   90 l	57 gal   260 l
<b>Engine</b>	Isuzu or Kohler diesel engine 24 HP   18 kw (Tier 4F)	FPT diesel engine 74 HP   55 kw (Tier 4F)
<b>Transport dimensions (LxWxH)</b>	50' 3" x 8' x 9' 6" 15,320 x 2,440 x 2,900 mm	53' 5" x 8' 6" x 11' 6" 16,290 x 2,590 x 3,500 mm
<b>Weight</b>	14,000 lbs   6,350 kg	25,000 lbs   11,350 kg



#### OPERATION EFFICIENCY

MOVE MORE MATERIAL IN A DAY



#### RELIABLE OPERATION

REDUCE DEPENDENCY ON WHEEL LOADERS FOR STOCKPILING



#### LOWER OPERATING COST

REDUCE OPERATOR AND FUEL COST



#### SEAMLESS MATERIAL FLOW

FEED WITH A CRUSHER OR SCREEN DIRECTLY ONTO THE STOCKPILE



#### MOBILE

CONVEYOR FOLDS HYDRAULICALLY FOR TRANSPORT



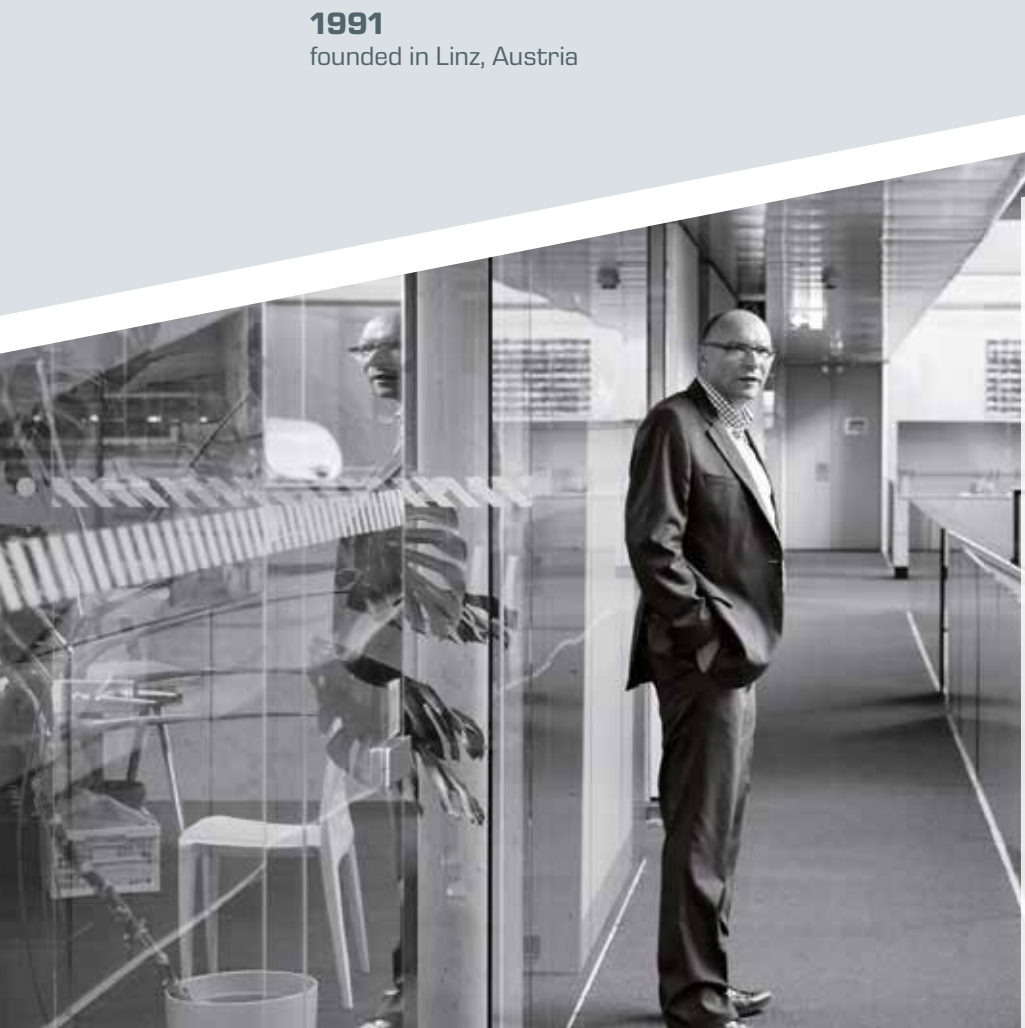
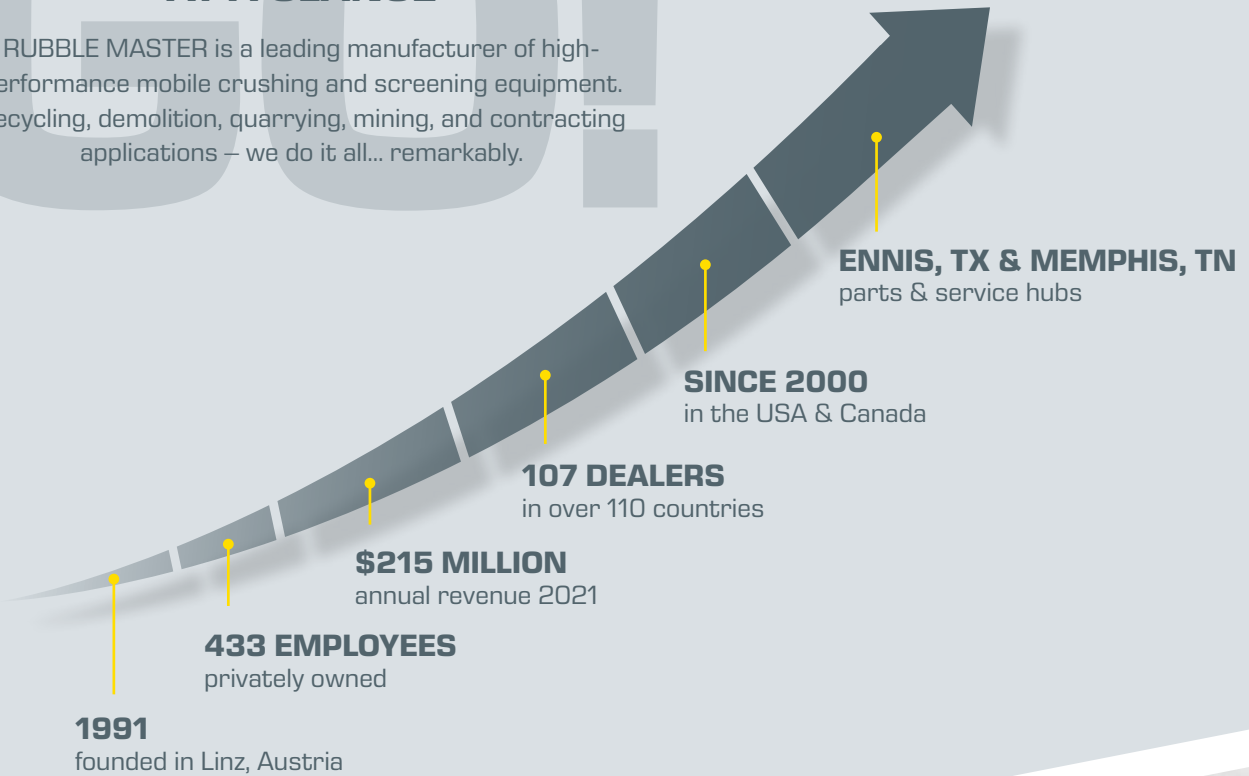
#### PERFECT MATERIAL STORAGE

AVOID COMPACTION, SEGREGATION OR CONTAMINATION OF YOUR STOCKPILE



## RUBBLE MASTER AT A GLANCE

RUBBLE MASTER is a leading manufacturer of high-performance mobile crushing and screening equipment. Recycling, demolition, quarrying, mining, and contracting applications – we do it all... remarkably.



“We are committed to the innovative spirit to be able to offer you products and services at all times, which improve your daily business in a lasting way. This passion is your guarantee for machines that fulfill your requirements in every respect. Implemented by a team of experts who are at your side as strong, reliable, and always professional partners.”

Gerald Hanisch  
Founder and Managing Director  
RUBBLE MASTER

# SERVICE SECOND TO NONE

RUBBLE MASTER understands that when your equipment goes down, it doesn't just cost you time, it costs you money. That's why, when you choose RUBBLE MASTER, you get more than great equipment, you get the industry's best service and parts support.



### 24/7 FACTORY SUPPORT

YOU CAN'T WAIT UNTIL THE NEXT DAY FOR SOMEBODY TO RESPOND. OUR TROUBLESHOOTING HOTLINE IS AVAILABLE 24/7 SO THAT YOU CAN MINIMIZE DOWNTIME AND MAXIMIZE PROFITS.



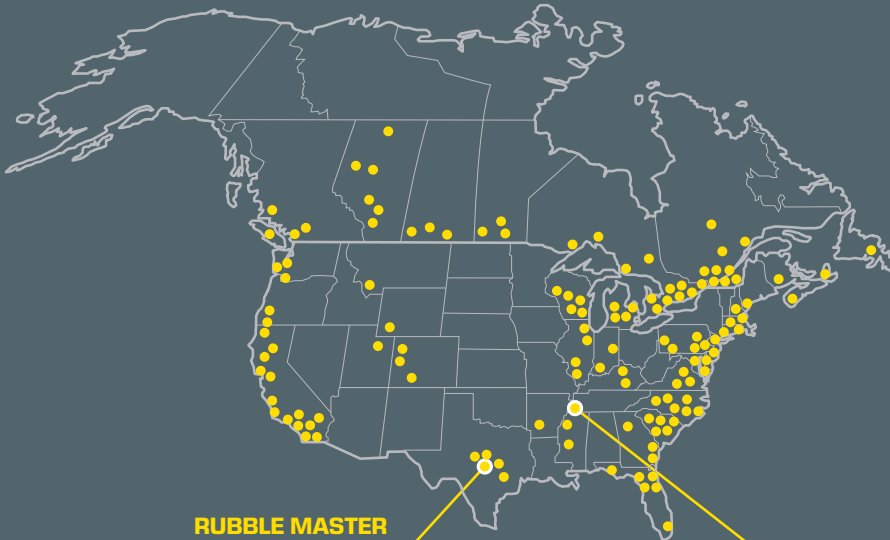
### LOCAL DEALER SUPPORT

SERVICE DELAYS COST YOU MONEY. RUBBLE MASTER DEALERS MAKE SURE YOU GET A PREMIUM SERVICE TO GROW YOUR BUSINESS.



### RAPID PARTS DELIVERY

WHEN YOU NEED PARTS, YOU NEED THEM FAST. THAT'S WHY WE KEEP \$5 MIL IN STOCK NEAR THE FED-EX SUPERHUB AT MEMPHIS AIRPORT.



### RUBBLE MASTER Headquarters

Ennis, TX

### RUBBLE MASTER Warehouse

Memphis, TN



## 3000+ HAPPY CUSTOMERS AND COUNTING

Since 1991, we've established ourselves as the world's leading crushing & screening experts. Our products are used by the most cutting-edge contractors and aggregate producers worldwide.

Welcome! to our world



## ASK US ALSO FOR OUR OTHER PRODUCTS



RM 7060! 2.0



RM 9060!



RM 10060!



RM 120X

The material in this document is for information only and is subject to change without notice.

RUBBLE MASTER assumes no liability resulting from errors or omissions in this document, or from the use of the information contained herein. Due to continual product development we reserve the right to change specifications without notice. Product performance figures given in this sales literature are for guidance purposes only, this information does not constitute an expressed or implied warranty or guarantee, but shows test examples provided by dealers. These results will vary depending on myriad of factors including (but not limited to) mesh sizes, type of feed material and input size.

RUBBLE MASTER does not warrant or represent that their products meet any federal, state, or local statutes, codes, ordinances, rules, standards or other regulations to operate the equipment. Compliance with these statutes and regulations is the responsibility of the user and will be dependent upon the area and the use to which the product is put by the user. Photographs are for illustrative purposes only, some or all of the machines may be fitted with options.



[RUBBLEMASTER.COM](http://RUBBLEMASTER.COM)



### RUBBLE MASTER AMERICAS CORP.

HEADQUARTERS:	WAREHOUSE:
2101 N Kaufman St.	3930 East Raines Rd
Ennis, TX 75119	Memphis, TN 38118

Toll-Free: (800) 230-0418  
sales@rubblemaster.com

SOLD & SERVICED BY: