



BMH80A Material Handler



KEY SPECS

146,500 LB
Operating Weight

65'7"
Maximum Reach

367HP
Engine Horsepower

30KW
Generator Rating

UP TO 22'9"
Cab Riser Visibility

Built Right. Here.

The BMH80A is made to meet the demands of large metal processing facilities. This 80-ton material handler is made right here in North America to deliver reliable performance for continuous duty operation when feeding shredders. And it's backed by industry-leading customer support and component access that keep your operation on track.

① More Powerful

With proven Deere components and rapid cycle times, the BMH80A allows you to do more in less time.

- Final Tier 4 PowerTech 6090 9.0L engine delivers net rated power of 367 hp at 2000 rpm.
- Market-leading swing speed and torque of 109,159 lb-ft maximizes cycle times.
- Industry-leading reach and capacity with a load chart that meets or exceeds the competition by up to 15% in the most common working zone.

② Increased Uptime

Second-to-none service and support paired with easy-to-find and maintain components means more uptime from your machine.

- Coast-to-coast John Deere dealer network, certified technicians, and 24/7/365 support minimize downtime.
- Easy operator access, clear visual indicators for fluid levels, and localized service points simplify regular maintenance.
- Common electrical and hydraulic components are widely available in North America, making it easier to get the parts you need.

③ Higher Efficiency

The energy recovery system and auto-idle/shutdown maximize fuel efficiency. They also contribute to reduced cost of operation and wear of machine components.

- Fully serviceable nitrogen-filled cylinder counteracts boom weight to boost performance and increase fuel economy.
- Preset power modes adjust engine settings, allowing a focus on fuel economy, productivity, or both.
- Auto-idle and auto-shutdown save fuel when the machine is inactive.

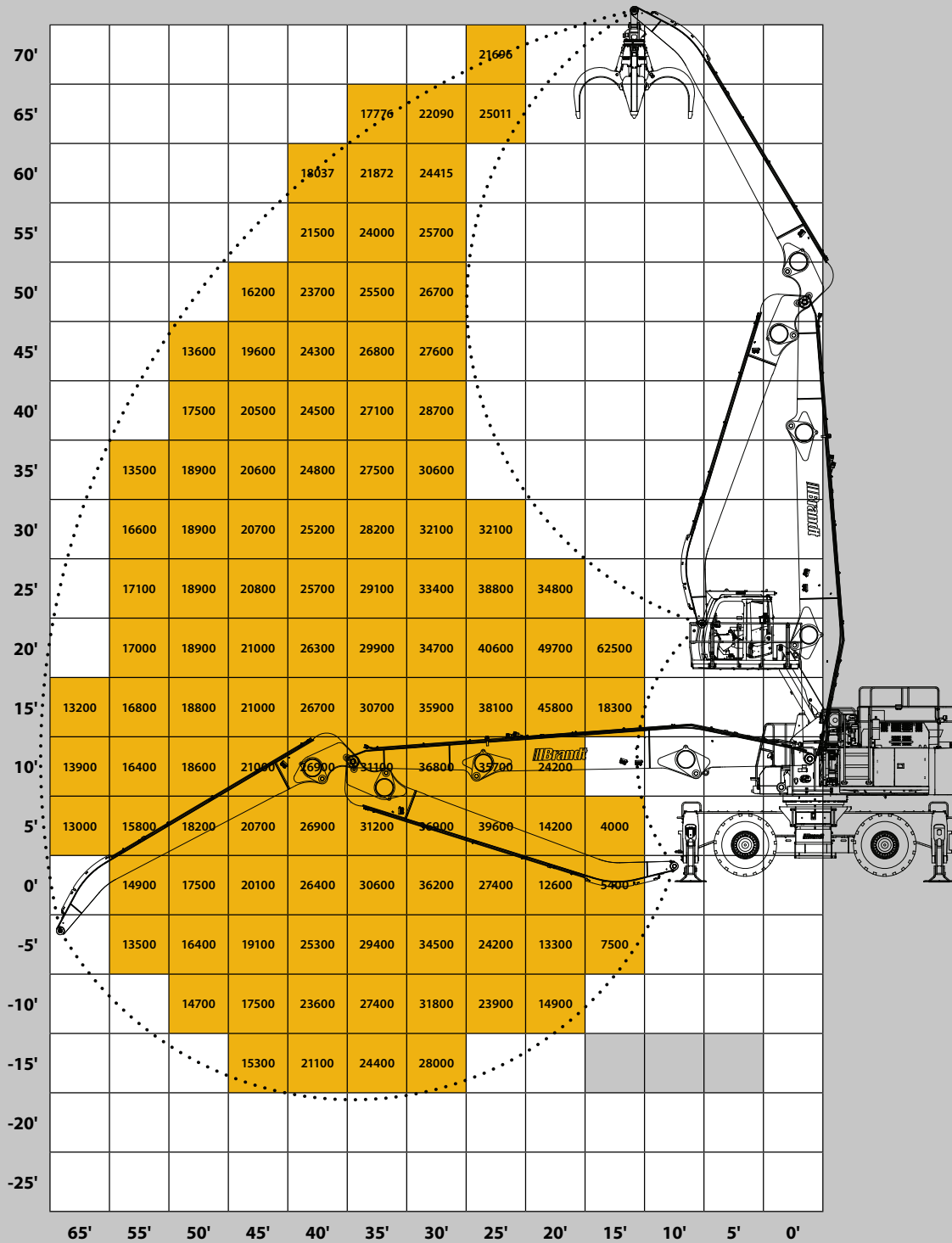
Powerful Value. **Delivered.**



BMH80A MATERIAL HANDLER SPECIFICATIONS

OPERATING WEIGHT	
Includes front, full fuel tank, operator, single solid tires	146,500 (66,440 kg)
WORKING FRONT	
Maximum Reach	65'-7" (20m)
ENGINE	
Model	John Deere PowerTech™ 6090 9.0L
Non-Road Emission Standard	EPA Final Tier 4/EU Stage IV
Net Rated Power (ISO 9249)	367 hp (274 kW) at 2000 rpm
Aspiration	Turbocharged, air-to-air charge-air cooler
GENERATOR	
Rating	30 kW
Voltage	230 V
Drive	Hydraulic
COOLING	
System	Reversing electric variable-speed fan drive with selectable intervals and manual override
HYDRAULIC SYSTEM <small>Closed center, electronic over hydraulic</small>	
Main Pumps	2 variable-displacement pumps
Maximum Rated Flow	106 gpm (400 L/m) x 2
Maximum Pressure	5200 psi (35,852 kPa)
TRAVEL / UNDERCARRIAGE <small>Rubber tired, all-wheel drive, variable displacement motor with dual stage transmission</small>	
Travel Speed	1st 0 - 4.5 mph (0 - 7 km/h), 2nd 0 - 10 mph (0 - 16 km/h)
Tires	Singles: 4 x 23.5 - 25
Gradeability	30%
Steering	Joystick Steering
Front Axle	Oscillating with auto hydraulic lock
Rear Axle	Fixed
Parking Brake	Disc, spring actuated hydraulic release
Service Brake	Multidisc, wet
SWING SYSTEM	
Swing Speed	8 RPM
Torque	109,159 lb-ft (148,000 Nm)
ELECTRICAL	
Battery Capacity	1400 CCA
Alternator Rating	100 amp
LED Work Lights	12 total: 2 on boom, 2 on arm, 2 FR cab, 1 RR cab, 1 FR of upper house near DEF, 3 RLR of upperhouse, 1 underhood
REFILL CAPACITIES	
Fuel Tank	178 gal (675 L)
Diesel Exhaust Fluid (DEF) Tank	18.8 gal (71 L)
Cooling System	16.5 gal (62.3 L)
Engine Oil with Filter	12 gal (44 L)
Hydraulic Tank	82 gal (310 L)

LOAD CHART



Attachment weight must be deducted from the values to get lift capacity, as values represent load on yoke.

Values are in lbs and conform to ISO 10567 and ASME B30.25, and do not exceed 75% tipping and 87% hydraulic capacity on firm level ground.

Values are with both outriggers down on firm level ground, and can be slewed to 360°.

Values are based on the machine using nitrogen system.

BMH80A MATERIAL HANDLER

FEATURES



Superior Sightlines with Hydraulic Cab Riser

The hydraulic cab riser offers a 22' 9" operator view, while three cameras with a combined 270° view help eliminate blind spots. Joystick steering also comes standard, eliminating the steering column, increasing operator visibility, and improving overall operator leg room.

Operator-friendly Electric Over Hydraulic (EH) Controls

The EH controls allow for multiple operators to preprogram their preferences into the machine at the push of a button. EH controls also remove the need for hydraulic lines running to the cab, eliminating additional wear items and significantly reducing in-cab heat.

Easy-to-access Controls

All machine monitoring controls, climate controls, and audio buttons are easily accessible and require minimal operator hand movements. The standard leather heated and cooled adjustable air ride seat keeps operators comfortable for the entire shift.

All-wheel Drive, 2-speed Transmission

A wheeled undercarriage with standard individual outrigger controls balances machine mobility and stability. The all-wheel drive, 2-speed transmission provides top speeds of up to 10 mph (16 kph). Full drivetrain guarding comes standard and protects critical components, while the swing away central guards allow easy maintenance access.

Rotary Encoders to Prevent Cab Contact

Rotary encoders act as limit switches constantly monitoring boom/arm placement to prevent the operator from accidentally contacting the cab with the attachment. When the grapple enters the cab contact zone, hydraulic function is slowed to allow the operator to control the grapple more safely.

Safer Access and Egress

The standard full-perimeter handrails on top of the machine protect operators while performing daily maintenance tasks. Three-point contact can be maintained by operators while accessing both the upper house and the undercarriage from the ground.

Protective FOG & Ballistic Glass

Polycarbonate front window is standard, along with the front window screen and top of cab Falling Object Guard (FOG) that protects the operator and cab from large debris/material. Optional upgrades include ballistic glass front window and projectile resistant glazing for all side windows.

Fire Suppression

Optional powder fire suppression system automatically activates when flame is detected in engine bay. It can also be manually activated from the ground or in the cab.

For more information:
Call us at **1-888-227-2638**
Email us at **sales@brandt.ca**
Or visit us at **brandt.ca**

© Brandt Industries Ltd. All rights reserved. The Brandt name and logo are trademarks of Brandt Industries Ltd., used under license. All product information and specifications are subject to change without notification. Printed in Canada. Revised 01/2026-CU