



# BSH40A Material Handler

KEY SPECS

**85,770 LB**  
Operating Weight

**46'**  
Maximum Reach

**223 HP**  
Engine Horsepower

**20' 8"**  
Cab Riser Visibility

**100,000 LB**  
Trailer Pulling Capacity

## Built Right. Here.

The BSH40A from Brandt is designed and manufactured in North America and purpose built for the forestry and sawmill industries. This world-class heavy lifter delivers unmatched productivity with 24/7/365 support plus easy-to-find components for increased uptime.

### ① Higher Productivity

With proven Deere components and rapid cycle times, the BSH40A allows you to do more in less time.

- Final Tier 4 PowerTech PVS 6.8L engine delivers net rated power of 223 hp at 1900 rpm.
- Market-leading swing torque and speed maximizes cycle times.
- Hydraulic cab riser offers 20' 8" operator eye view, paired with cameras to eliminate blind spots.

### ② More Uptime

Second-to-none service and support paired with easy-to-maintain components mean more uptime from your machine.

- North American hydraulic fittings can be sourced quickly to reduce waiting for less common parts.
- Auto-greaser keeps moving parts lubricated, and filters are located on one side for easy maintenance.
- Coast-to-coast dealer network, factory-trained technicians, and 24/7/365 support minimize downtime.

### ③ Increased Efficiency

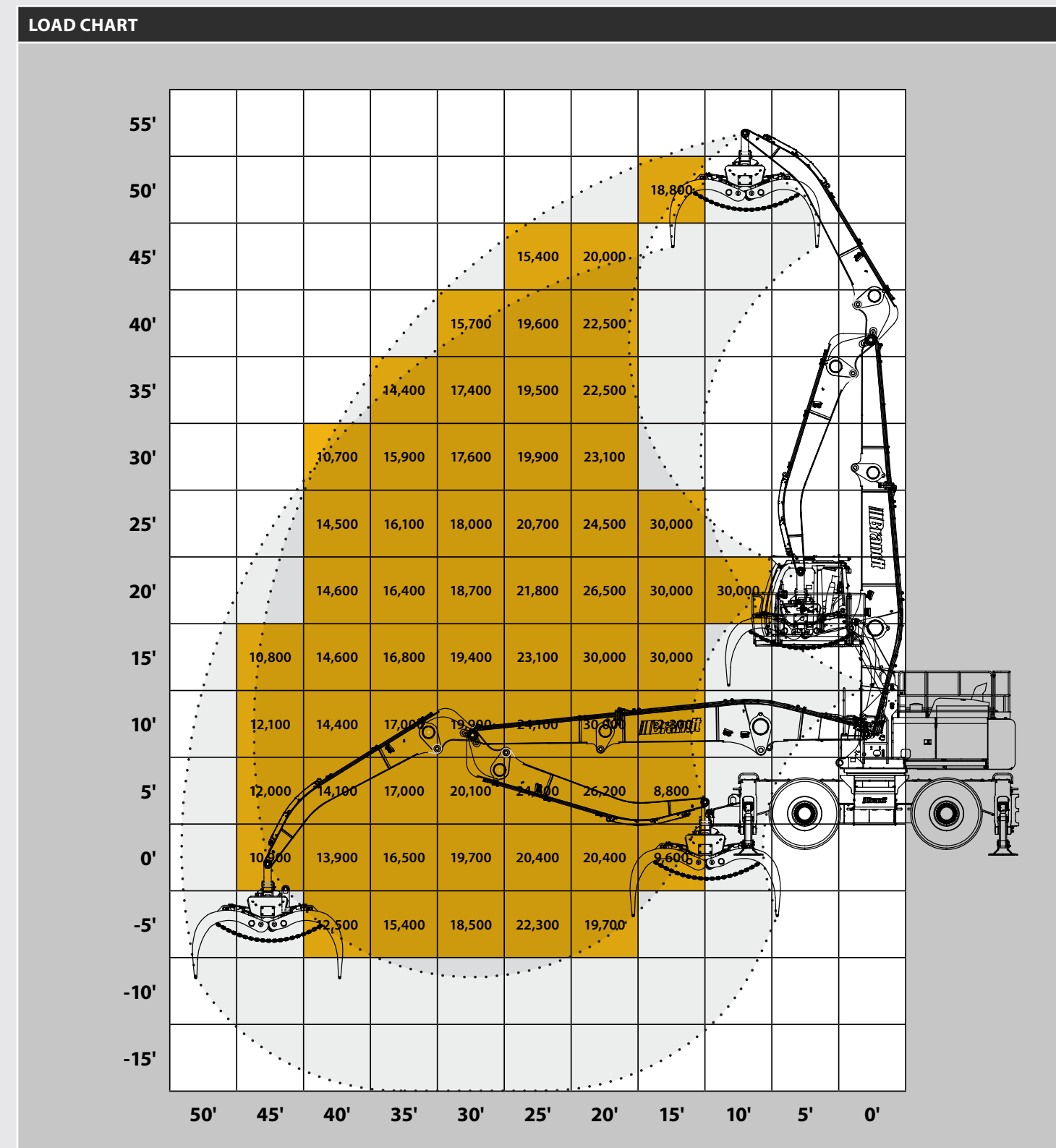
The energy recovery system and auto-idle/shutdown maximize fuel efficiency. They also contribute to reduced cost of operation and wear of machine components.

- Fully serviceable nitrogen-filled cylinder and reservoir reduce fuel consumption.
- Power modes adjust engine settings, allowing a focus on fuel economy, productivity, or both.
- Auto-idle and auto-shutdown save fuel when the machine is inactive.

Powerful Value. **Delivered.**

# BSH40A MATERIAL HANDLER SPECIFICATIONS

OPERATING WEIGHT	
14m front, full fuel tank, operator, single pneumatic tires	85,771 lbs (38,900 kg)
WORKING FRONT	
Maximum Reach	46' (14m)
ENGINE	
Model	John Deere PowerTech™ PSS 6.8L, 6068HT107
Non-Road Emission Standard	EPA Final Tier 4/EU Stage IV
Net Rated Power (ISO 9249)	223 hp (166 kW) at 1900 rpm
Aspiration	Series turbocharged, air-to-air charge-air cooler
COOLING	
System	Reversing electric variable-speed fan drive
HYDRAULIC SYSTEM <small>Closed center, electronic over hydraulic</small>	
Main Pumps	2 variable-displacement pumps
Maximum Rated Flow	62.3 gpm (236 L/m) x 2
Maximum Pressure	5200 psi (35,852 kPa)
TRAVEL / UNDERCARRIAGE <small>Rubber tired, all-wheel drive, variable displacement motor with dual stage transmission</small>	
Travel Speed	1st 0 - 4.5 mph (0 - 7 km/h) / 2nd 0 - 10 mph (0 - 16 km/h)
Tires	Singles: 4 x 23.5 - 25 Pneumatic
Gradeability	31%
Steering	Joystick Steering
Front Axle	Oscillating with auto hydraulic lock and limited slip differential
Rear Axle	Fixed with limited slip differential
Towing Capacity	100,000 lbs
Parking Brake	Disc, spring actuated hydraulic release
Service Brake	Multidisc, wet
SWING SYSTEM	
Swing Speed	8 RPM
Torque	66,749 lb-ft (90,500 Nm)
ELECTRICAL	
Battery Capacity	950 CCA
Alternator Rating	300 amp
LED Work Lights	12 total: 2 on boom, 2 on arm, 2 FR cab, 1 RR cab, 1 FR of upper house near DEF, 3 RLR of upperhouse, 1 underhood
REFILL CAPACITIES	
Fuel Tank	136 gal (514 L)
Diesel Exhaust Fluid (DEF) Tank	9.2 gal (35 L)
Cooling System	9.5 gal (36 L)
Engine Oil with Filter	5 gal (20.5 L)
Hydraulic Tank	41 gal (156 L)



Attachment weight must be deducted from the values to get lift capacity, as values represent load on yoke.  
 Values are in lbs and conform to ISO 10567 and ASME B30.25, and do not exceed 75% tipping and 87% hydraulic capacity on firm level ground.  
 Values are with both outriggers down on firm level ground, and can be slewed to 360°.  
 Values are based on the machine using nitrogen system.

# BSH40A MATERIAL HANDLER FEATURES



## Superior Sightlines With Hydraulic Cab Riser

The hydraulic cab riser offers a 20' 8" operator view, while three cameras with a combined 270° view help eliminate blind spots. Joystick steering also comes standard, eliminating the steering column, increasing operator visibility, and improving overall operator leg room.

## Operator-friendly Electric Over Hydraulic (EH) Controls

The EH controls allow for multiple operators to preprogram their preferences into the machine at the push of a button. EH controls also remove the need for hydraulic lines running to the cab, eliminating additional wear items and significantly reducing in-cab heat.

## Easy-to-access Controls

All machine monitoring controls, climate controls, and audio buttons are easily accessible and require minimal operator hand movements. The standard leather heated and cooled adjustable air ride seat keeps operators comfortable for the entire shift.

## Rotary Encoders to Prevent Cab Contact

Rotary encoders act as limit switches constantly monitoring boom/arm placement to prevent the operator from accidentally contacting the cab with the attachment. When the arm enters the Cab Contact Zone, hydraulic function automatically reduces to approximately 60% of operating speed, allowing safe and controlled movement of the attachment out of the cab area.

## Safer Access & Egress

The standard full-perimeter handrails on top of the machine protect operators while performing daily maintenance tasks. Three-point contact can be maintained by operators while accessing both the upper house and the undercarriage from the ground.

## Protective FOG & Ballistic Glass

Polycarbonate front window is included standard, along with the front window screen and top of cab falling object guarding system (FOGS) that protects the operator and cab from large debris/material. Optional upgrades include ballistic glass front window and projectile resistant glazing for all side windows.

## Mobility

A wheeled undercarriage balances machine mobility and stability. The all-wheel drive, 2-speed transmission provides top speeds of up to 15 kilometres an hour. Full drivetrain guarding comes standard and protects critical components, while the swing away central guards allow easy maintenance access.

## Reversing Cooling Fan

The cool-on-demand electric reversing fan has programmed automatic reversing intervals, as well as manual activation, which back-blows cooler cores to reduce debris buildup. Additionally, the smaller radiators are swing out to allow greater access to all cooling cores. This design also ensures maximum fuel efficiency, reduced noise levels, and faster engine warm up.

For more information:  
Call us at **1-888-227-2638**  
Email us at **sales@brandt.ca**  
Or visit us at **brandt.ca**

© Brandt Industries Ltd. All rights reserved. The Brandt name and logo are trademarks of Brandt Industries Ltd., used under license. All product information and specifications are subject to change without notification. Printed in Canada. Revised 02/2026-CU